



Multiple District Convention 2025

CONVENTION OF LIGHT

NEWSLETTER #2

DECEMBER 2024

Thurs 1 May - Sun 4 May
Goudini Spa

Thank you to all those who have registered nice and early.
We currently have 107 registrations - 14 District E and 93 District W



Registration R1500

Secure your place for just R400 then pay over 4 months

Thank you MD410 for a R300 pp sponsorship

www.lionsconvention.co.za



TRANSPORT

Transport will be organised for anyone needing transport from Cape Town Airport to Goudini Spa (at delegates' own cost). Please contact: Mark Rossouw - markwilro@gmail.com

ACCOMMODATION

Once you have selected what accommodation you would like, your initial contact will be with MDC25 Team Member Jean who will try and resolve any initial queries. The booking will then be passed to Goudini Spa, and they will deal with payments and invoicing you.

- We request your ID so you can get your discount if you are an ATKV member - Goudini will automatically apply it
- NB: If you try and book direct with Goudini Spa, you will be charged a 50% deposit. Book through Jean, there is a payment plan in place.
- Accommodation at Goudini Spa is focused on groups and sharing, there is no single accommodation. Should you choose not to share, the rates attached still apply.
- Goudini Spa now agreed to minimum of 2 nights accommodation booking, previously 3.
- As a reminder, accommodation details attached.

Leading the Team
Convention Convenor
PDG Liz Houston



LIONS BRIGHTSIGHT
A Multiple District 410 Project

We invite all clubs to start collecting old spectacles, which can be recycled by Lions BrightSight - we will have collection bins at MD Convention 2025

EMAIL JEAN TO BOOK ON

jeaniej78@gmail.com



GOUDINI SPA



Accommodation/tariff (per unit per night)



SLANGHOEK VILLA

R5085 - SLEEPS 6

Three Bedrooms. One bedroom with double bed and private veranda. Two bedrooms, each with two single beds and private veranda.

One bathroom with bath, basin and toilet. Second bathroom with shower, basin and toilet. Air conditioning in the main bedroom and living area. Fireplace in the lounge. Dining room table and chairs. Veranda with covered braai area.

[More Info on this Accommodation](#)

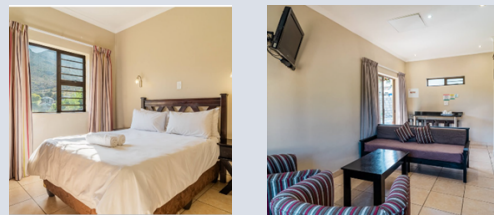
5 BED LUXURY RONDAWEL

R3290 - SLEEPS 5

2 Bedrooms: Main bedroom with double bed. Second bedroom with two single beds. Complete four plate stove, oven and extractor fan in kitchen.

Living area with sleeping coach and air conditioning. Bathroom with shower, basin and toilet. Covered braai. Parking.

[More info on this Accommodation](#)



4 BED LUXURY RONDAWEL

R2540 - SLEEPS 4

Layout: One bedroom with double bed.

Open plan kitchen, dining & living area with two single sleeper couches with air-conditioning. Oven with induction stove in kitchen.

Bathroom with shower. Towels provided. Private Braai facility. Parking

[More info on this Accommodation](#)



EMAIL JEAN TO BOOK ON

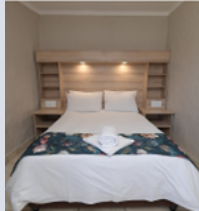
jeaniej78@gmail.com



GOUDINI SPA



Accommodation/tariff (per unit per night)



4 BED UPGRADE RONDAWEL

R2675 - SLEEPS 4

Layout: One bedroom with double bed.

Kitchen/Living area with two single beds.

Induction stove and an oven in kitchen.

Bathroom with shower, basin and toilet.

Braai facilities.

[More info on this Accommodation](#)

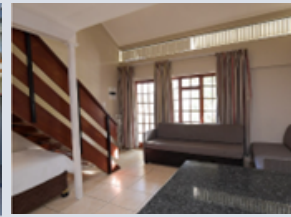
BADSBERG

R2590 - SLEEPS 5

Layout: Semi-attic units. Upper level: One bedroom with double bed, and bathroom with shower, basin and toilet.

Ground level: Two single beds and one sleeping coach, or one single bed and two sleeping coaches in open plan kitchen/living area, and bathroom with bath, basin and toilet. Three plate stove with oven. Private braai facilities. Parking area +-30m from unit.

[More info on this Accommodation](#)



CAMP SITE

R1035

Paved. All stands are approximately

81m². Each with 15A power point.

Each with private braai facilities.

Ablution facilities, washing-up facilities and laundry

[More info on this Accommodation](#)

